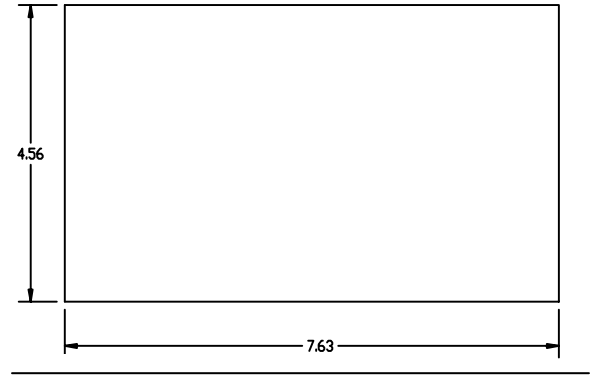


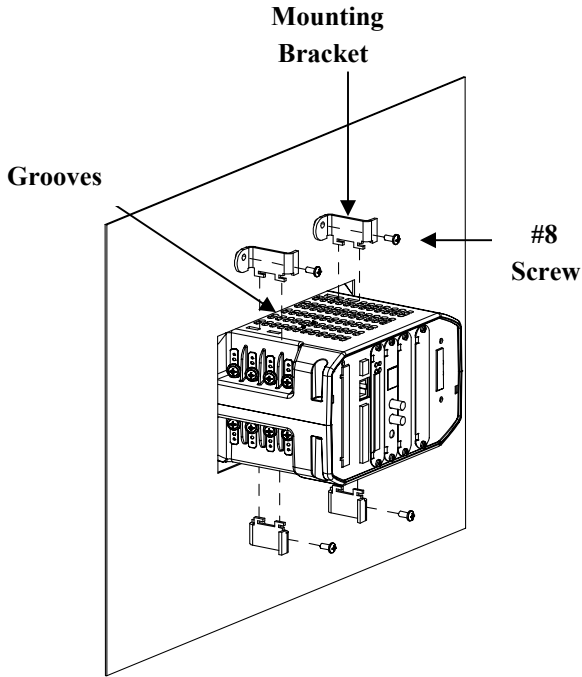
Nexus® 1500 Meter Quick Start Guide

Mechanical Installation

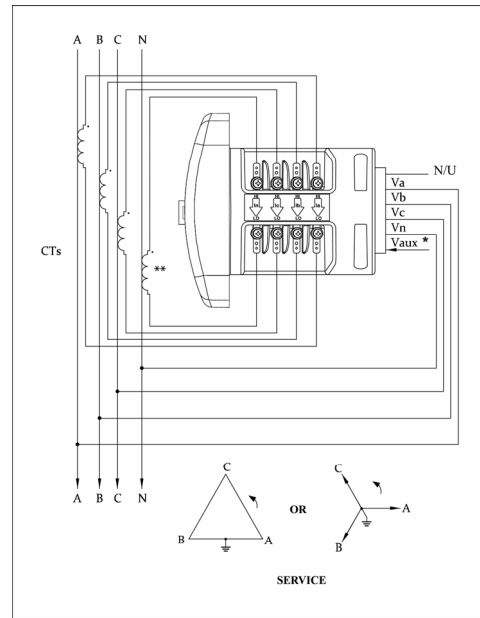
1. Slide the meter into the panel's cut-out. (See the diagram shown on the right. You can use either an octagonal or a rectangular cut-out.)
2. From the back of the panel, slide the 4 Mounting Brackets into the grooves on the top and bottom of the meter housing - 2 fit on the top and 2 fit on the bottom.
3. Snap the Mounting Brackets into place.
4. Secure the meter to the panel with lock washer and a #8 screw in each of the 4 mounting brackets.
5. Tighten the screws with a #2 Philips screwdriver.
Do not over-tighten.



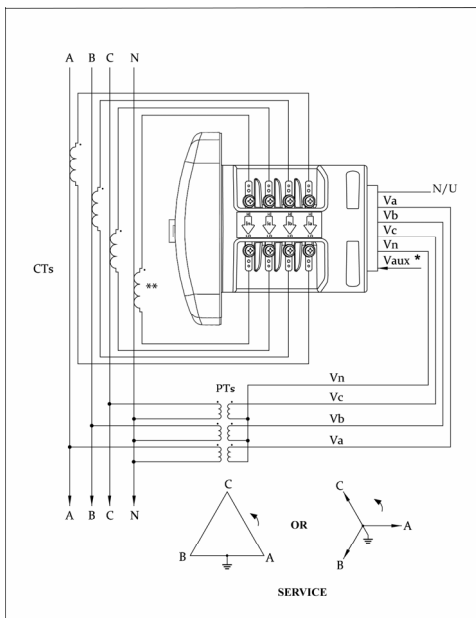
Rectangular Cut-out Dimensions



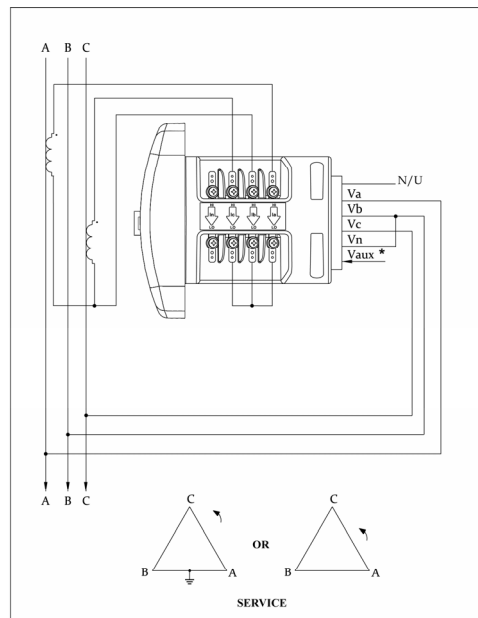
Electrical Wiring Diagrams



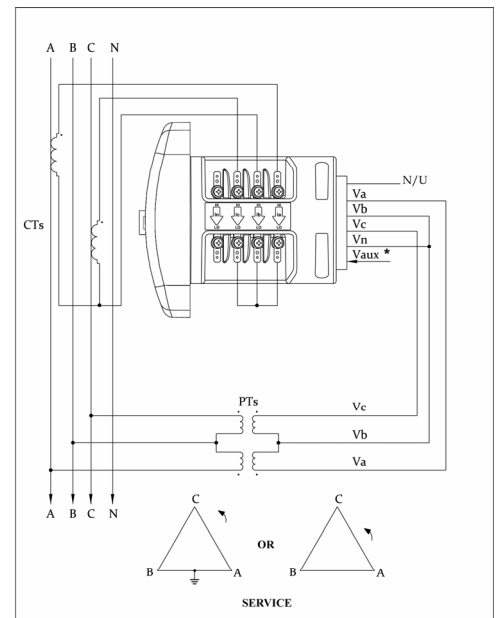
WYE or DELTA Direct 3 Phase, 4-wire



WYE or DELTA with PTs 3 Phase, 4-wire



DELTA Direct 3 Phase, 3-wire



DELTA with PTs, 3 Phase, 3-wire

NOTE: See the meter's Installation and Operation Manual for additional wiring configurations.

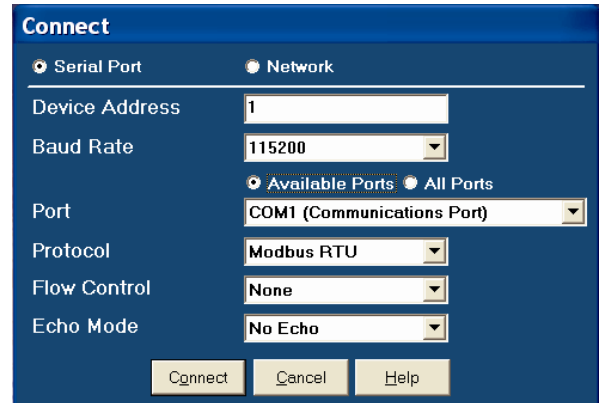
Programming the Nexus® 1500 Meter Using the USB Virtual Com Port

NOTES:

- Before using the USB Virtual Com port for the first time, see Appendix A of the *Nexus® 1500 Meter Installation and Operation Manual* that came with your meter, for instructions on configuring it.
- You can view detailed meter programming instructions by clicking **Help>Contents** from the Communicator EXT Main screen.

Connecting to the Nexus® 1500 Meter

1. Open Communicator EXT software. (This software is on the enclosed CD.)
2. Click the **Connect** icon on the Tool Bar. You will see the Connect screen, shown on the right.
3. Click Serial Port.
4. Select Baud rate of 115200.
5. Select the Port that is the USB virtual Com port.
6. Click **Connect**. You will see the Device Status screen.
7. Click **OK**. You will see the Main Communicator EXT screen.



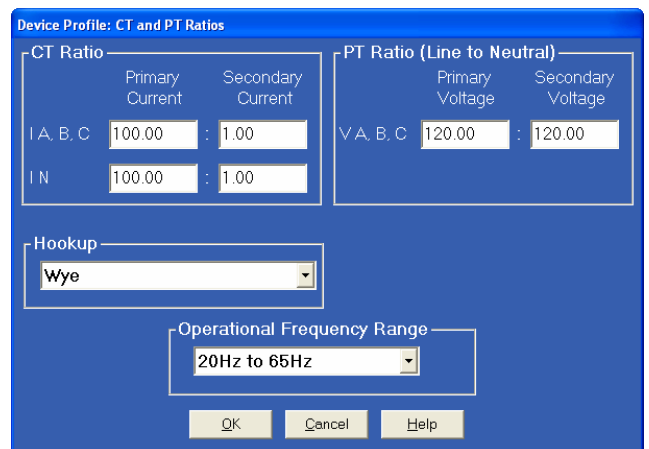
Configuring the Nexus® 1500 Meter

Click the **Profile** icon on the Tool Bar. You will see the Device Profile screen.

NOTE: Instructions for a few basic settings are given in this Quick Start Guide. For more information, click **Help>Contents** from the Title Bar of the Communicator EXT Main screen, to view the Communicator EXT 3.0 User's Manual.

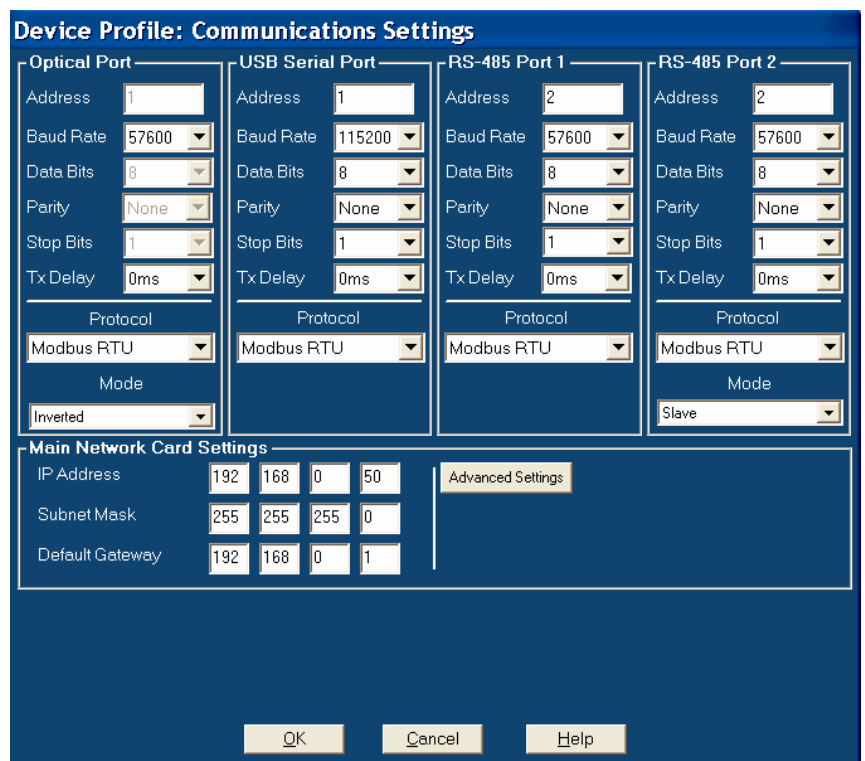
CT, PT Ratios and System Hookup

1. From the Device Profile screen, double-click **General Settings>CT, PT Ratios and System Hookup**. The current settings are shown on the screen.
2. Double-click one of the settings to open the CT and PT Ratios screen, shown on the right.
3. You can enter CT and PT Ratios and select Hookup and Frequency from the pull-down menu.
4. Click **OK** to close the screen. Click **Update Device** from the Device Profile screen to save your settings.



Communication Settings

1. From the **Device Profile** screen, double-click **General Settings>Communications**. The current settings for the meter's Ports are shown on the screen.
2. Double-click one of the Port settings to open the **Communications** screen, shown on the right.
3. You can configure the settings for all four Communication Ports, as well as the two Network Cards. Click **Help** to view instructions for configuring these settings.
4. Click **OK** to close the screen. Click **Update Device** from the **Device Profile** screen to save your settings.



NOTE: You can also use the standard or optional Ethernet ports, the optional RS485 ports, or the ANSI optical port to connect to and configure the Nexus® 1500 meter.