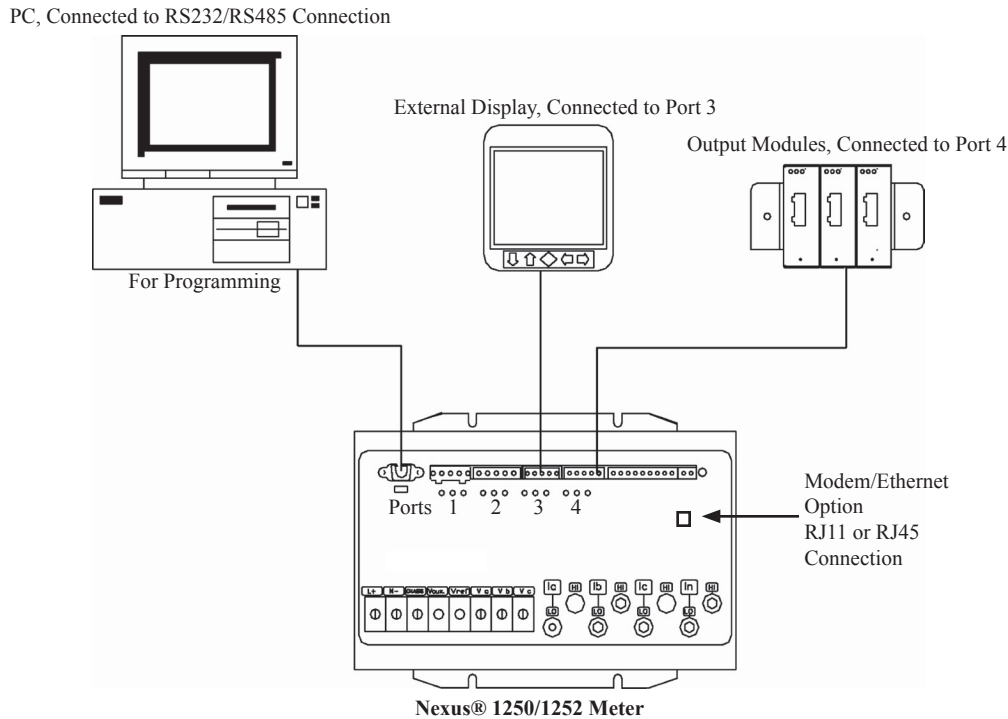


Nexus® 1250/1252 Meter Quick Start

Hardware Installation



Installing the Meter

Mount the Nexus® 1250/1252 meter against a firm, flat surface. Use a #10 screw in each of the four slots on the flange to insure that the unit is installed securely. For safety reasons, mount the meter in an **enclosed and protected environment**, such as in a switchgear cabinet.

Installing an External Display - P40N or P60N

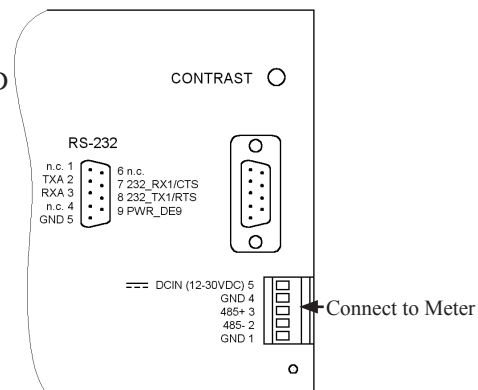
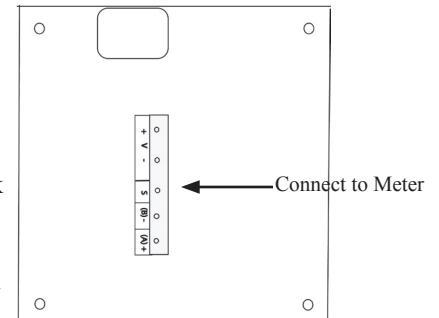
The Nexus® 1250/1252 meter LED Display Model # P40N mounts using a standard ANSI C39.1 drill plan.

1. Secure the four mounting studs to the back of the panel with the supplied nuts.
2. Insert one end of the supplied RS485 cable into Port 3 of the Nexus® meter (or to another Port set to a Baud Rate of 9600). Insert the other end of the cable into the back of the Nexus® P40N Display.

To mount the Nexus® P60N Touch Screen Display: A bezel and a gasket are included with the P60N. Install the P60N at a height and angle that make it easy for the operator to see and access the screen.

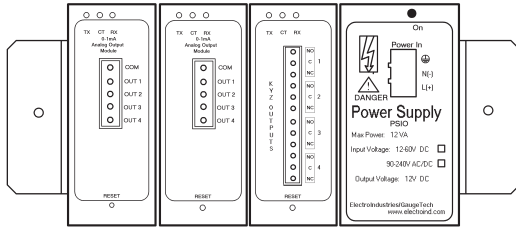
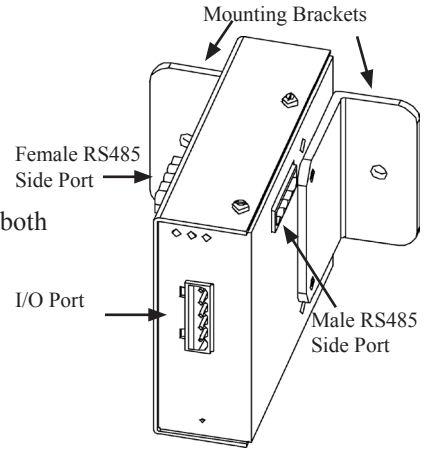
1. Cut an opening in the mounting panel and carefully “drop in” the P60N with bezel and gasket attached. (See the meter’s Installation and Operation manual on the enclosed CD for exact cut-out dimensions.)
2. Fasten the unit securely with the four 6-32 hex nuts supplied.
3. Insert one end of the supplied RS485 cable into Port 3 of the Nexus® meter (or to another Port set to a Baud Rate of 9600). Insert the other end of the cable into the back of the Nexus® P60N Display.

NOTE: RS485 communication is viable for up to 4000 feet (1219 meters). If your cable length exceeds 200 feet you must use a remote power supply, such as EIG’s PSIO.

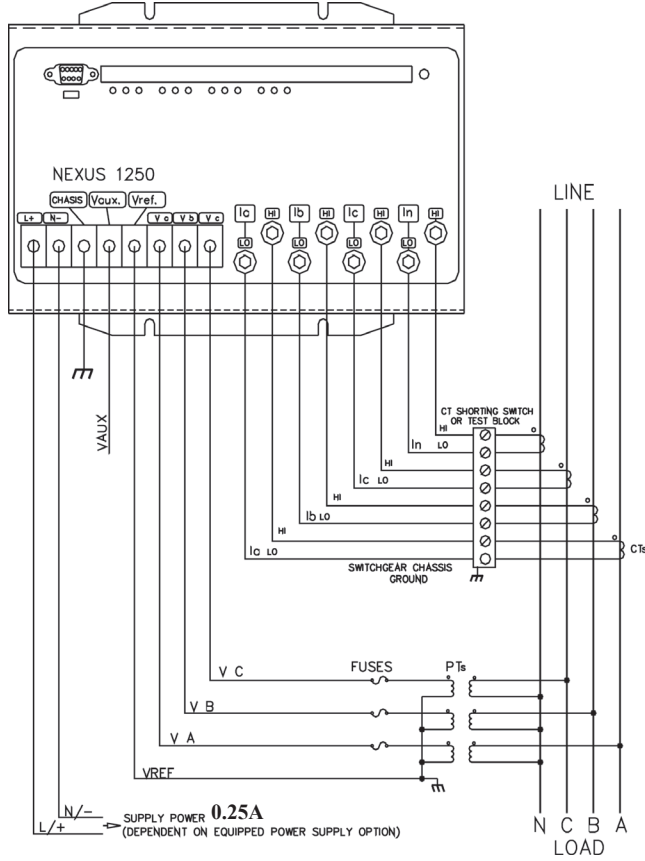


Installing Optional Output Modules

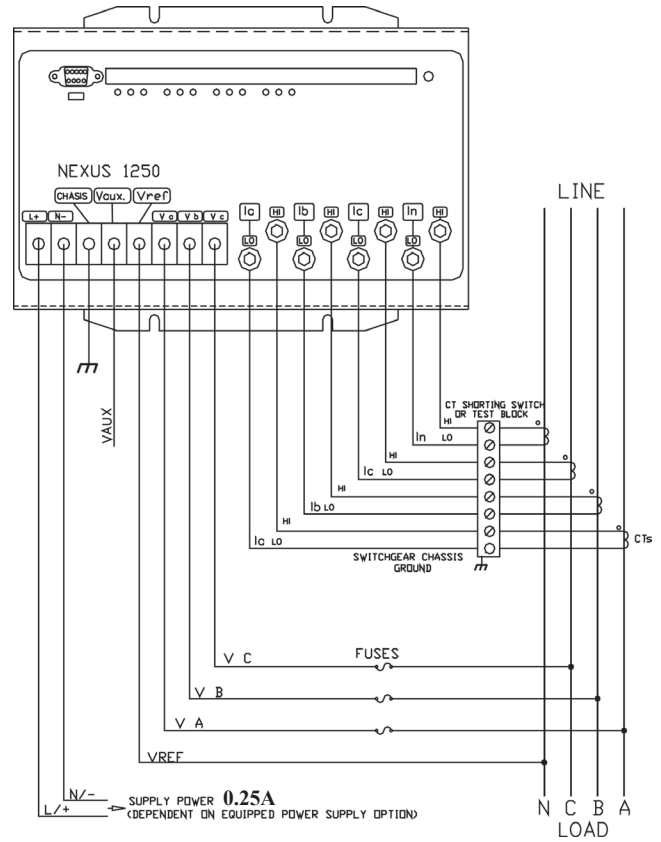
1. Secure the mounting brackets to the Output module using the supplied screws (#440 pan-head screws).
 2. Secure the brackets to a flat surface using a #8 screw with a lock washer.
- Six feet of RS485 cable harness is supplied. Connect the Output module's Male RS485 Side Port to connect to the meter's Port 4 or to another module's male RS485 side port.
 - If multiple Output modules are connected together, secure a mounting bracket to both ends of the group. (See figure below.) Connect multiple Output modules by connecting the Male RS485 port on one module to the Female RS485 port on the next module. See Chapter 9 of the meter's Installation and Operation Manual for additional information.



Electrical Installation

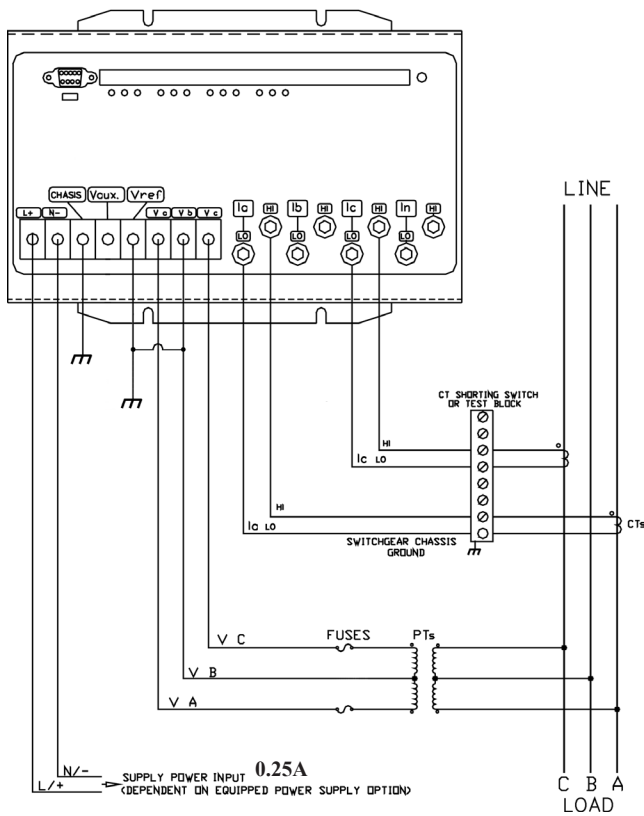


4-Wire, 3-Element Wye, with 3 PTs and 3 CTs

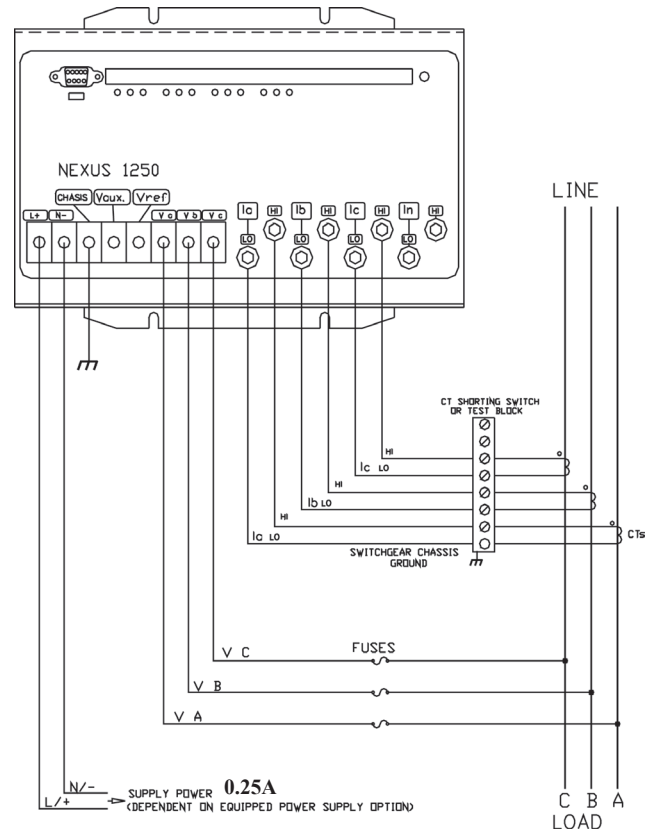


4-Wire, 3-Element Wye, with 4 CTs

NOTE: This page and the next show some possible wiring configurations. Refer to the meter's manual for additional configurations.



3-Wire, 2-Element Open Delta with 2 PTs and 2 CTs



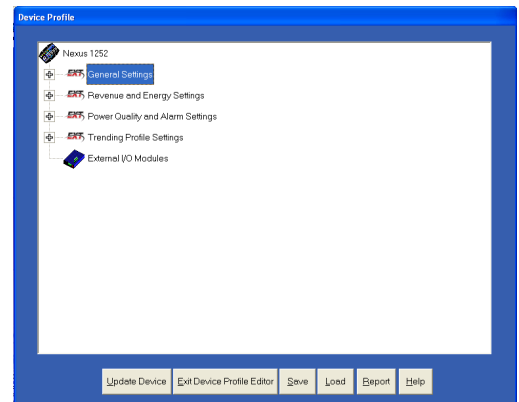
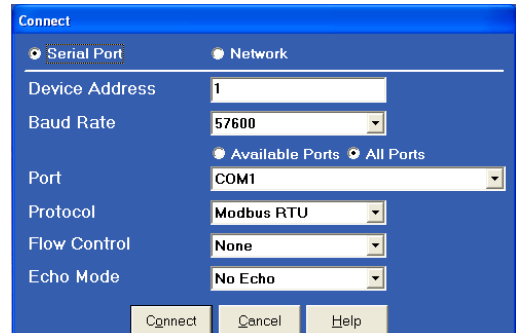
3-Wire, 2-Element Open Delta with 3 CTs

Programming the Meter through Communicator EXT Software:

1. Using the enclosed CD, install Communicator EXT software on your PC or laptop.
2. From the Communicator EXT Main screen, click the **Connect** icon in the Icon bar at the top of the screen.
3. You will see the Connect screen, shown on the right.
NOTE: The settings on the right are for a Serial connection using RS485. To connect using the Optical port: set the Baud Rate to 9600; connect the A7Z at one end to the meter's Optical Port; and at the other end connect to a PC's RS232 Serial port (9- or 25-pin). For instructions on configuring a connection using the Internal Modem (INP2) or Network (INP200 or INP202) options, see the *Communicator EXT User Manual*, on the enclosed CD.
4. Click Connect. The software will connect to the meter.
5. Click the **Profile** icon in the Icon bar at the top of the screen. The Device Profile screen opens. See the screen shown on the right.

NOTES:

- o Instructions for a few basic settings are given in this Quick Start Guide. Refer to the *Communicator EXT User Manual* on the enclosed CD for additional programming instructions.
- o Click **Help**>**Contents** from the Title Bar at the top of the screen to open the User Manual online.



CT, PT Ratios and System Hookup

1. From the Device Profile screen, double-click **General Settings**>**CT, PT Ratios and System Hookup**. The current settings are shown on the screen.
2. Double-click one of the settings to open the CT and PT Ratios screen, shown on the right.
3. You can enter CT and PT Ratios and select Hookup and Frequency from the pull-down menu.
4. Click **OK** to close the screen. Click **Update Device** from the Device Profile screen to save your settings.

Communication Settings

1. From the Device Profile screen, double-click **General Settings**>**Communications**. The current settings for the meter's Ports are shown on the screen.
2. Double-click one of the Port settings to open the Communications Settings screen, shown on the right.
3. You can set the settings for both Communication Ports, as well as the optional Modem and Network settings. Click **Help** to view instructions for configuring these settings.
4. Click **OK** to close the screen. Click **Update Device** from the Device Profile screen to save your settings.

Uploading a Device Profile and Naming the Meter

To upload a previously saved Device profile to the meter:

1. From the Communicator EXT Main screen, click the **Device Profile** icon.
2. The Device Profile screen opens. Click the **Load** button at the bottom of the screen.
3. A window opens showing you any saved Device Profiles (these are .nps files). Select the profile you want to load and click **Open**.
4. The saved Device profile is loaded into Communicator EXT.
5. To give the meter a unique name, click **General Settings**>**Labels**.
6. You will see the sub-menu shown on the right. Click **Meter Designation** to open the Labels screen.
7. The Labels screen is shown on the right. Enter a unique name for the connected meter in the Meter Designation field and then click **OK**.
8. You can now click the **Update Device** button in the Device Profile screen to upload this Device profile to the connected meter.